

NCMRWF

Monthly Data Monitoring Report June-2024



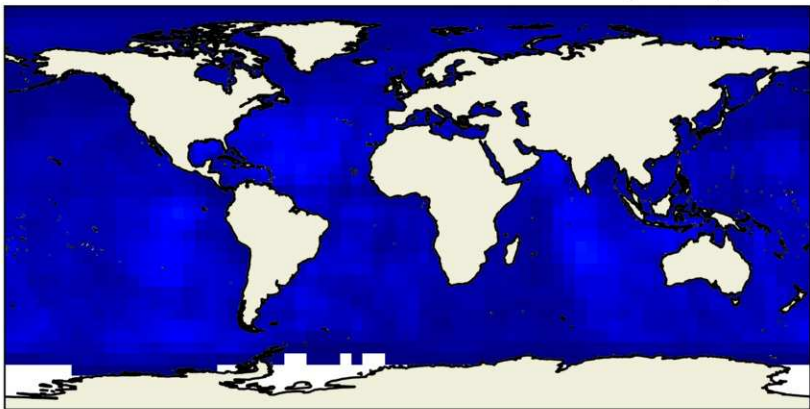
based on daily data(5x5)degree

NATIONAL CENTRE FOR MEDIUM RANGE WEATHER FORECASTING
Min'istry of Earth Sciences
A-50, Sector-62
NOIDA, UP, Pin: 201 309

Satellite-derived SST Observations (5°x5°)



60°N
30°N
0°
30°S
60°S



180° 120°W 60°W 0° 60°E 120°E 180°



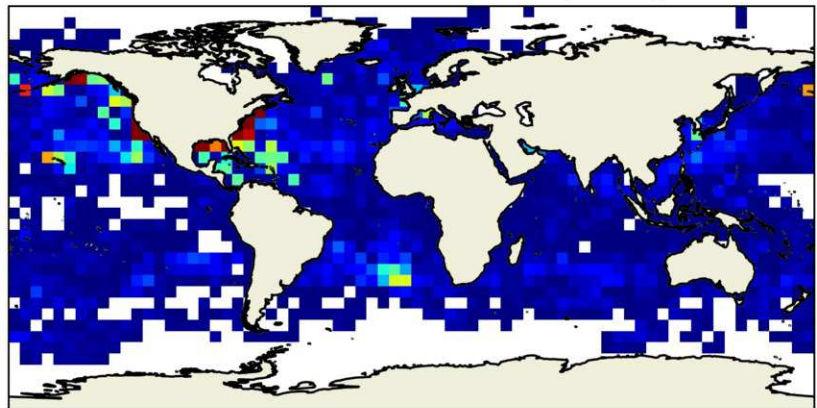
0 20000 40000 60000 80000 100000 120000

SST Observation

Surface SST Observations (5°x5°)



60°N
30°N
0°
30°S
60°S



180° 120°W 60°W 0° 60°E 120°E 180°



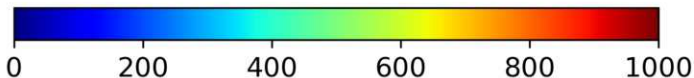
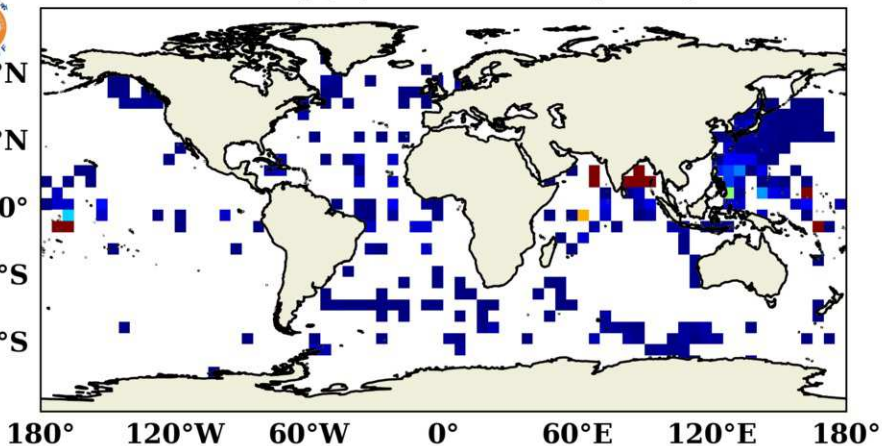
0 5000 10000 15000 20000 25000

SST Observation

Profile (T/S) Observations (5°x5°)



60°N
30°N
0°
30°S
60°S

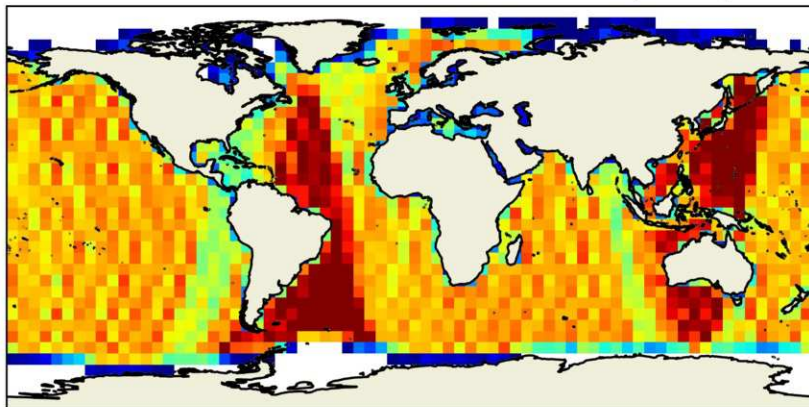


T/S profile Observation

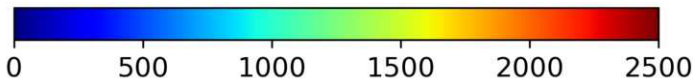
Satellite-derived SLA Observations ($5^{\circ} \times 5^{\circ}$)



60°N
30°N
0°
30°S
60°S



180° 120°W 60°W 0° 60°E 120°E 180°

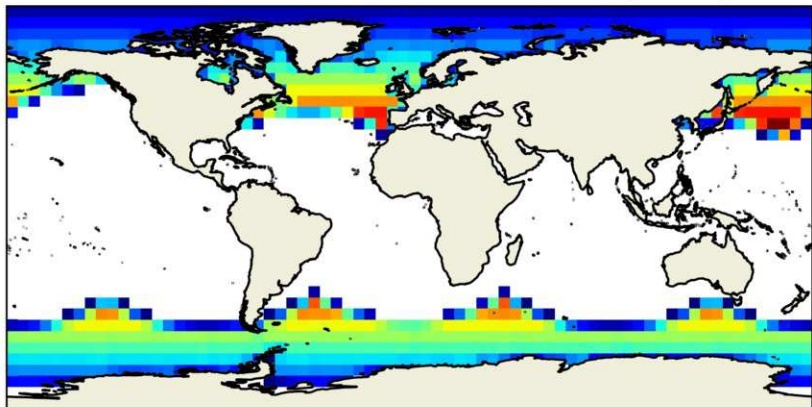


SLA Observation

Satellite-derived SIC Observations (5°x5°)



60°N
30°N
0°
30°S
60°S



180° 120°W 60°W 0° 60°E 120°E 180°

